

Three Phase Squirrel Cage IE3 Premium Efficiency Motors Low Voltage

AG - B6 SERIES
160 - 355 SIZES
INDUSTRIAL APPLICATIONS

new IE³ series



 **MarelliMotori®**

DIMENSIONS

B3 - B35

Type	Poles	B3 - B35																			
		A	AA	AB	AC	AD	B	BA	BB	BC	BA'	C	CA	H	HA	HD	K	L	LC	W	
A6_160	M L	2-6	254	55	296	314	258	210	60	296	21	90	108	258	160	20	418	14,5	683	796	279
			254	55	296	314	258	254	60	296	21	90	108	214	160	20	418	14,5	683	796	279
A6_180	M L	2-4 4-6	279	58	320	354	278	241	80	320	20,5	80	121	254	180	22	458	14,5	723	836	296
			279	58	320	354	278	279	80	320	20,5	80	121	216	180	22	458	14,5	723	836	296
A6_200	L	2-6	318	74	360	354	278	305	70	347	21	70	133	220	200	24	478	18,5	764	877	296
A6_225	M S-M	2 4-6	356	76	405	411	-	311	80	360	24,5	80	149	255	225	28	523	18,5	820	935	288
			356	76	405	411	-	311	80	360	24,5	80	149	255	225	28	523	18,5	850	965	318
A6_250	M	2 4-6	406	90	465	411	-	349	90	406	28,5	90	168	223	250	28	548	22	875	990	318
			406	90	465	411	-	349	90	406	28,5	90	168	223	250	28	548	22	875	990	318
A6_280	S	2 4-6	457	90	540	490	-	368	110	480	30,5	110	190	272	280	40	640	24	959	1110	350
			457	90	540	490	-	368	110	480	30,5	110	190	272	280	40	640	24	959	1110	350
	M	2 4-6	457	90	540	490	-	419	110	480	30,5	110	190	221	280	40	640	24	959	1110	350
			457	90	540	490	-	416	110	480	30,5	110	190	221	280	40	640	24	959	1110	350
B6_315	M	2 4-6	508	110	590	604	-	457	110	520	32	165	216	299	315	43	800	27	1102	1252	387
			508	110	590	604	-	457	110	520	32	165	216	299	315	43	800	27	1132	1282	417
	L	2 4-6	508	110	590	604	-	508	110	582	32	200	216	398	315	43	862	27	1252	1402	402
508	110		590	604	-	508	110	582	32	200	216	398	315	43	862	27	1282	1432	432		

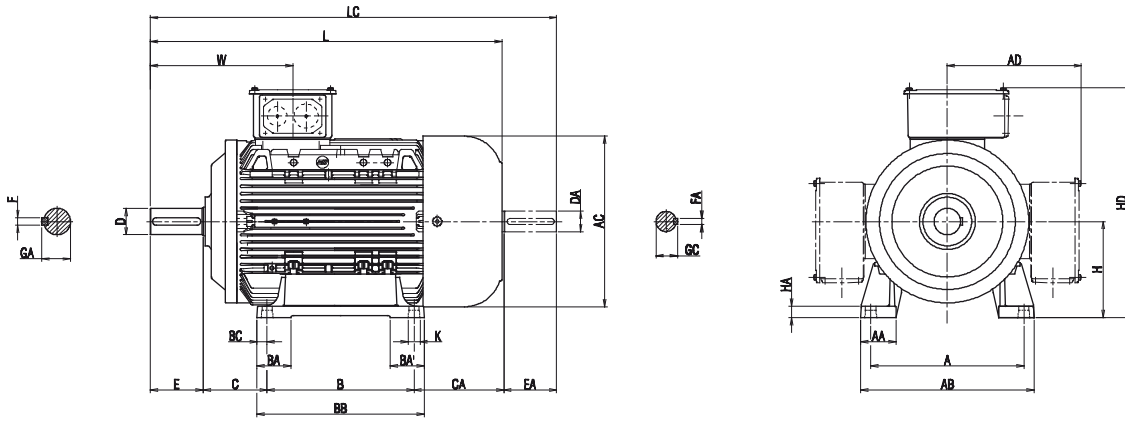
Type	Poles	B3- B35 Shaft extension										B35 Flange					
		D	E	F	GA	DA	EA	FA	GC	LA	M	N	P	S	T		
A6_160	M L	2-6	42	110	12	45	42	110	12	45	15	300	250	350	18,5	5	
			42	110	12	45	42	110	12	45	15	300	250	350	18,5	5	
A6_180	M L	2-4 4-6	48	110	14	51,5	42	110	12	45	14	300	250	350	18,5	5	
			48	110	14	51,5	42	110	12	45	14	300	250	350	18,5	5	
A6_200	L	2-6	55	110	16	59	42	110	12	45	15	350	300	400	18,5	5	
A6_225	M S-M	2 4-6	55	110	16	59	55	110	16	59	16	400	350	450	18,5	5	
			60	140	18	64	55	110	16	59	16	400	350	450	18,5	5	
A6_250	M	2 4-6	60	140	18	64	55	110	16	59	18	500	450	550	18,5	5	
			65	140	18	69	55	110	16	59	18	500	450	550	18,5	5	
A6_280	S	2 4-6	65	140	18	69	60	140	18	64	18	500	450	550	18,5	5	
			75	140	20	79,5	60	140	18	64	18	500	450	550	18,5	5	
	M	2 4-6	65	140	18	69	60	140	18	64	18	500	450	550	18,5	5	
			75	140	20	79,5	60	140	18	64	18	500	450	550	18,5	5	
B6_315	M	2 4-6	65	140	18	69	60	140	18	64	22	600	550	660	22	6	
			80	170	22	85	65	140	18	69	22	600	550	660	22	6	
	L	2 4-6	70	140	20	74,5	65	140	18	64	22	600	550	660	22	6	
90	170		25	95	65	140	18	69	22	600	550	660	22	6			

B5

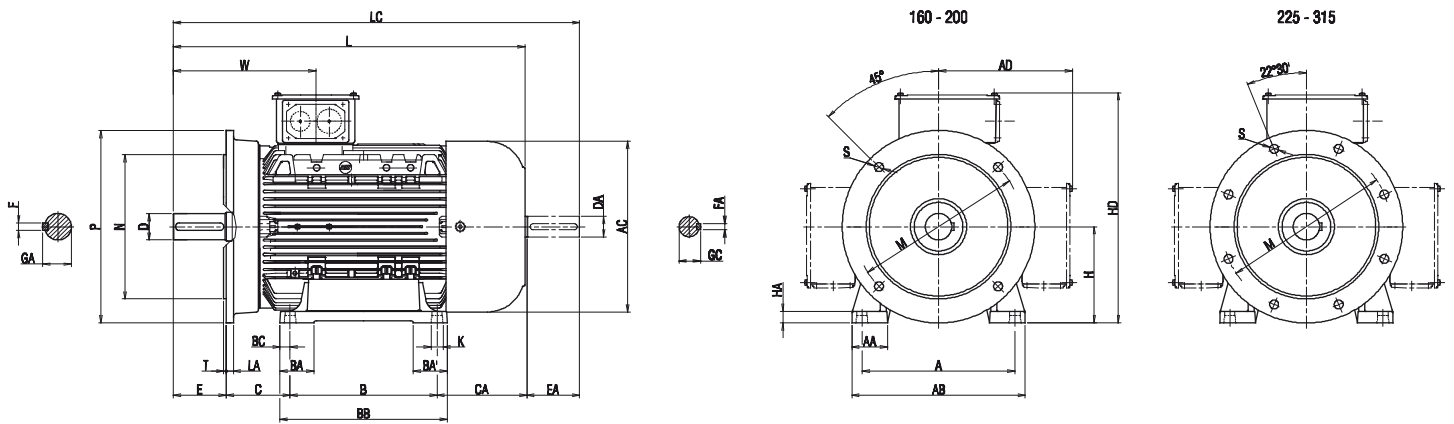
Type	Poles	B5								B5 Shaft extension								B5 Flange					
		AC	AD	L	LC	LD	W	D	E	F	GA	DA	EA	FA	GC	LA	M	N	P	S	T		
A6_160	M L	2-6	314	258	683	796	748	279	42	110	12	45	42	110	12	45	15	300	250	350	18,5	5	
			314	258	683	796	748	279	42	110	12	45	42	110	12	45	15	300	250	350	18,5	5	
A6_180	M L	2-4 4-6	354	278	723	836	788	296	48	110	14	51,5	42	110	12	45	14	300	250	350	18,5	5	
			354	278	723	836	788	296	48	110	14	51,5	42	110	12	45	14	300	250	350	18,5	5	
A6_200	L	2-6	354	278	764	877	829	296	55	110	16	59	42	110	12	45	15	350	300	400	18,5	5	
A6_225	M S-M	2 4-6	411	298	820	935	885	288	55	110	16	59	55	110	16	59	16	400	350	450	18,5	5	
			411	298	850	965	915	318	60	140	18	64	55	110	16	59	16	400	350	450	18,5	5	
A6_250	M	2 4-6	411	298	875	990	940	318	60	140	18	64	55	110	16	59	18	500	450	550	18,5	5	
			411	298	875	990	940	318	65	140	18	69	55	110	16	59	18	500	450	550	18,5	5	
A6_280	S	2 4-6	490	360	959	1110	1054	350	65	140	18	69	60	140	18	64	18	500	450	550	18,5	5	
			490	360	959	1110	1054	350	75	140	20	79,5	60	140	18	64	18	500	450	550	18,5	5	
	M	2 4-6	490	360	959	1110	1054	350	65	140	18	69	60	140	18	64	18	500	450	550	18,5	5	
			490	360	959	1110	1054	350	75	140	20	79,5	60	140	18	64	18	500	450	550	18,5	5	
B6_315	M	2 4-6	604	485	1102	1252	1177	387	65	140	18	69	60	140	18	64	22	600	550	660	22	6	
			604	485	1132	1282	1207	417	80	170	22	85	65	140	18	69	22	600	550	660	22	6	
	L	2 4-6	604	547	1252	1402	1327	402	70	140	20	74,5	65	140	18	64	22	600	550	660	22	6	
604	547		1282	1432	1357	432	90	170	25	95	65	140	18	69	22	600	550	660	22	6			

DRAWINGS

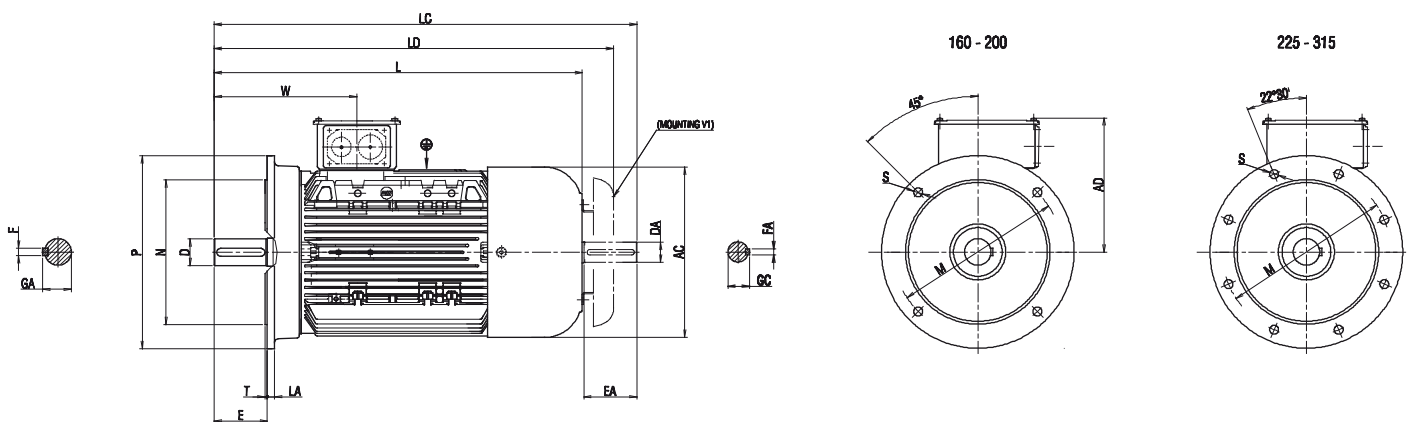
B3



B35



B5



DIMENSIONS

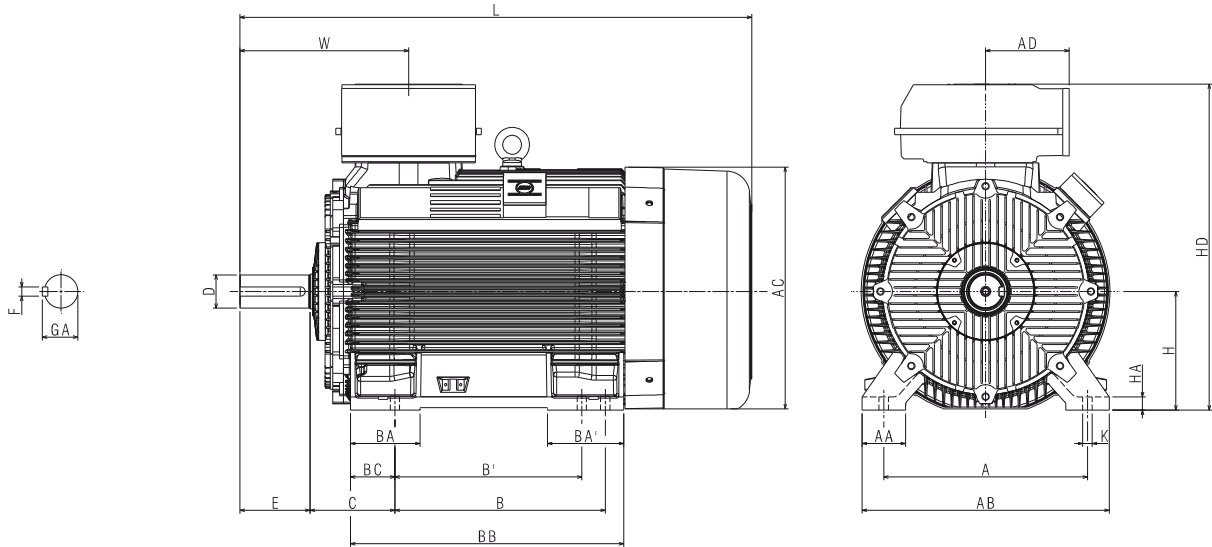
B3 - B35 - V1

Type	Poles	A	AA	AB	AC	AD	B	BA	BB	BC	B'	BA'	H	HA	HB	HD	K	L	LC	W
B6_355	LA-LB 2	610	130	740	770	267	630	208	818	133	560	228	355	40	607	962	28	1475	1595	435
	LA-LB 4-6	610	130	740	770	267	630	208	818	133	560	228	355	40	607	962	28	1545	1665	505
	LC-LE 2	610	130	740	770	267	630	208	1018	133	800	313	355	40	607	962	28	1675	1795	435
	LC-LF 4-6	610	130	740	770	267	630	208	1018	133	800	313	355	40	607	962	28	1745	1865	505

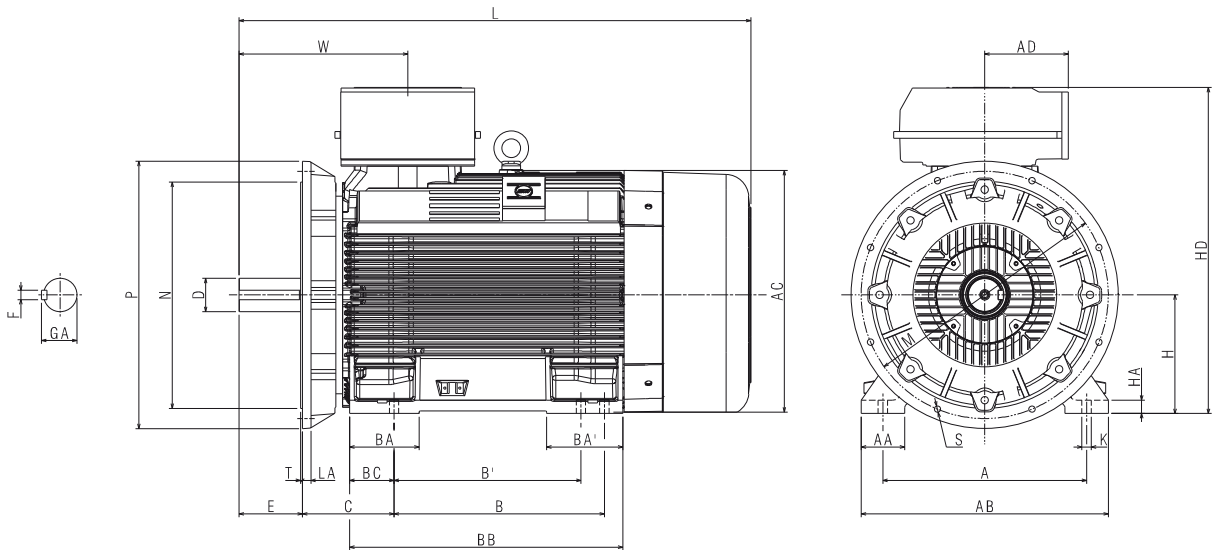
Type	Poles	D	Shaft extension				Flange					
			E	F	GA	LA	M	N	P	S	T	
B6_355	LA-LB 2	75	140	20	79.5	25	740	680	800	24	6	
	LA-LB 4-6	100	210	28	106	25	740	680	800	24	6	
	LC-LE 2	75	140	20	79.5	25	740	680	800	24	6	
	LC-LF 4-6	100	210	28	106	25	740	680	800	24	6	

DRAWINGS

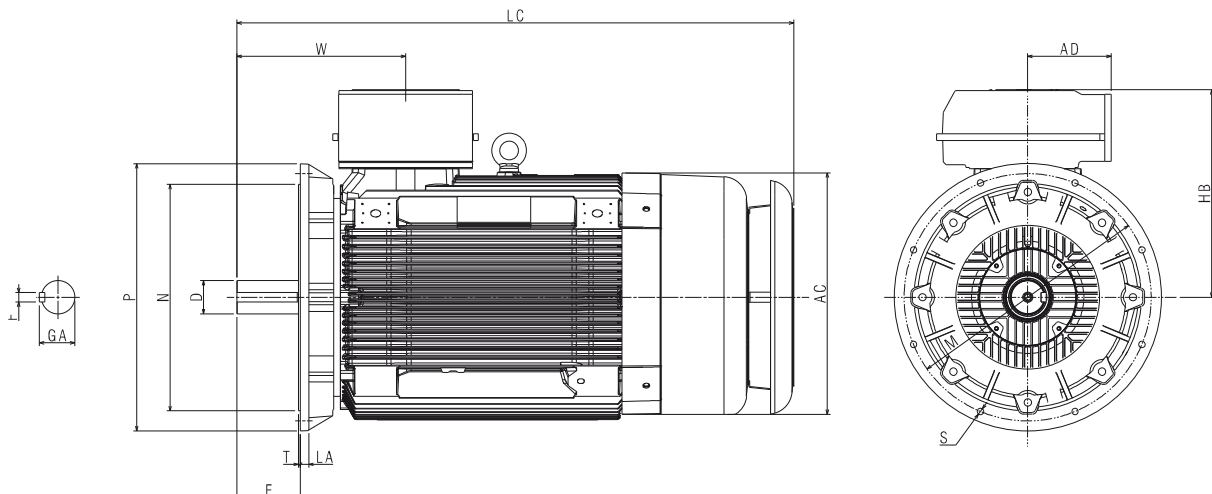
B3



B35



V1





Italian Manufacturing Plant
Arzignano - Italy



Malaysian Manufacturing Plant
Shah Alam - Malaysia



HEADQUARTERS

Marelli Motori S.p.A.

Via Sabbionara 1
36071 Arzignano (VI) - Italy
(T) +39 0444 479711
(F) +39 0444 479888
www.marellimotori.com
sales@marellimotori.com

Branches

Milan

Via Cesare Cantù 29
20092 Cinisello Balsamo (MI) - Italy
(T) +39 02 66013166
(F) +39 02 66013483
milan@marellimotori.com

Florence

Via Panciatichi 37/2
50127 Firenze - Italy
(T) +39 055 431838
(F) +39 055 433351
florence@marellimotori.com

OVERSEAS COMPANIES

ASIA PACIFIC

Marelli Asia Pacific Sdn Bhd Marelli Manufacturing Asia Sdn Bhd

Lot PT 5038-5041 Jalan Teluk Datuk 28/40
Off Persiaran Sepang, Seksyen 28,
40400 Shah Alam, Selangor D.E.
Malaysia
(T) +60 3 5192 7213
(F) +60 3 5517 1883 / 1881
asiapacific@marellimotori.com

SOUTH AFRICA

Marelli Electrical Machines South Africa (Pty) Ltd

Unit 3 & 4, 124 Koornhof Rd,
Meadowdale, Ext. 2
Germiston 1614 Gauteng
Republic of South Africa
(T) +27 11 392 1920
(F) +27 11 392 1668
southafrica@marellimotori.com

CENTRAL EUROPE

Marelli Central Europe GmbH

Heilswannenweg 50
31008 Elze
Germany
(T) +49 5068 462 400
(F) +49 5068 462 409
germany@marellimotori.com

SPAIN

Representative Office

Calle Constanza 5
08029 Barcelona
Spain
(T) +34 66 446 4121
(F) +34 93 419 6094
spain@marellimotori.com

GREAT BRITAIN

Marelli UK Ltd

Meadow Lane
Loughborough
Leicester LE11 1NB
UK
(T) +44 1509 615 518
(F) +44 1509 615 514
uk@marellimotori.com

USA

Marelli USA, Inc

1620 Danville Road
Harrodsburg, KY 40330
USA
(T) +1 859 7 342 588
(F) +1 859 7 340 629
usa@marellimotori.com